

Beaumont Health

Beaumont Health Scholarly Works and Archives

Conference Presentation Abstracts

Urology

10-2021

A Unique Case of Renal Pelvic Urothelial Carcinoma with Extensive Small Round Cell Sarcoma Differentiation Showing SWSR1 Gene Rearrangement

Zubin Shetty

Mitual Amin

Savitha Balaraman

Sugandh Shetty

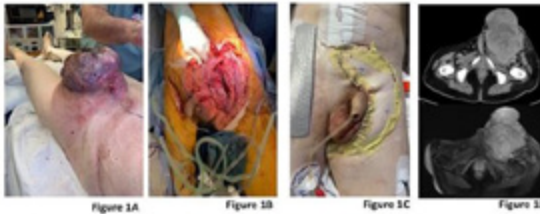
Follow this and additional works at: https://scholarlyworks.beaumont.org/urology_confabstract



Part of the [Oncology Commons](#), [Pathology Commons](#), and the [Urology Commons](#)

bilateral pelvic (ILND) resection was performed (Figure 1 a,b), with subsequent right rectus abdominis myocutaneous flap reconstruction (Figure 1c) of the left inguinal region. Contralateral ILND was performed for possible vein harvesting, while access to the pelvis was obtained for vascular control.

Conclusion: For patients with advanced penile cancer with advanced disease and local symptoms, palliative resection may be considered.



Funding: N/A

Podium #103

A UNIQUE CASE OF RENAL PELVIC UROTHELIAL CARCINOMA WITH EXTENSIVE SMALL ROUND CELL SARCOMA DIFFERENTIATION SHOWING EWSR1 GENE REARRANGEMENT

Zubin Shetty, MD, MS¹, Mitul Amin, MD², Savitha Balaraman, MD³, Sugandh Shetty, MD^{1,4}
¹Beaumont Health, Dept. of Urology, Royal Oak, MI, ²Beaumont Health, Dept. of Pathology, Royal Oak, MI, ³Beaumont Health, Dept. of Medical Oncology, Royal Oak, MI, ⁴Comprehensive Urology, Royal Oak, MI
Presented By: Zubin Shetty, MD, MS, BS

Introduction: Ewings-like sarcoma is a rare subgroup of small round cell sarcoma with immunohistochemistry and morphological similarities to Ewing Sarcoma. We report a rare case of renal pelvis invasive urothelial carcinoma with small round cell sarcoma differentiation showing EWSR1 gene rearrangement.

Case: An 84-year-old male presented with 6 months of intermittent painless gross hematuria. Workup revealed a 5.4cm left renal pelvicalyceal mass suspicious for transitional cell carcinoma and a 2.5cm enhancing left renal cortical lesion. The patient underwent an uncomplicated robotic left nephroureterectomy. Pathology revealed small round cell sarcoma composing greater than 80% of the renal pelvis tumor with the remainder composed of conventional invasive high grade urothelial carcinoma. Additionally, there were focal areas resembling chondroid differentiation. FISH examination of the round cell component was positive for a variant complex EWSR1 gene rearrangement. The renal mass was consistent with renal clear cell carcinoma. Margins were negative.

Conclusion: This case may be the first documented case of upper tract urothelial carcinoma with small round cell sarcomatoid differentiation showing EWSR1 gene rearrangement. Literature review reveals only one case report of a urothelial carcinoma of the bladder with underlying "Ewing Sarcoma" features. Genetic testing will guide adjuvant chemotherapy recommendations.

Funding: N/A